

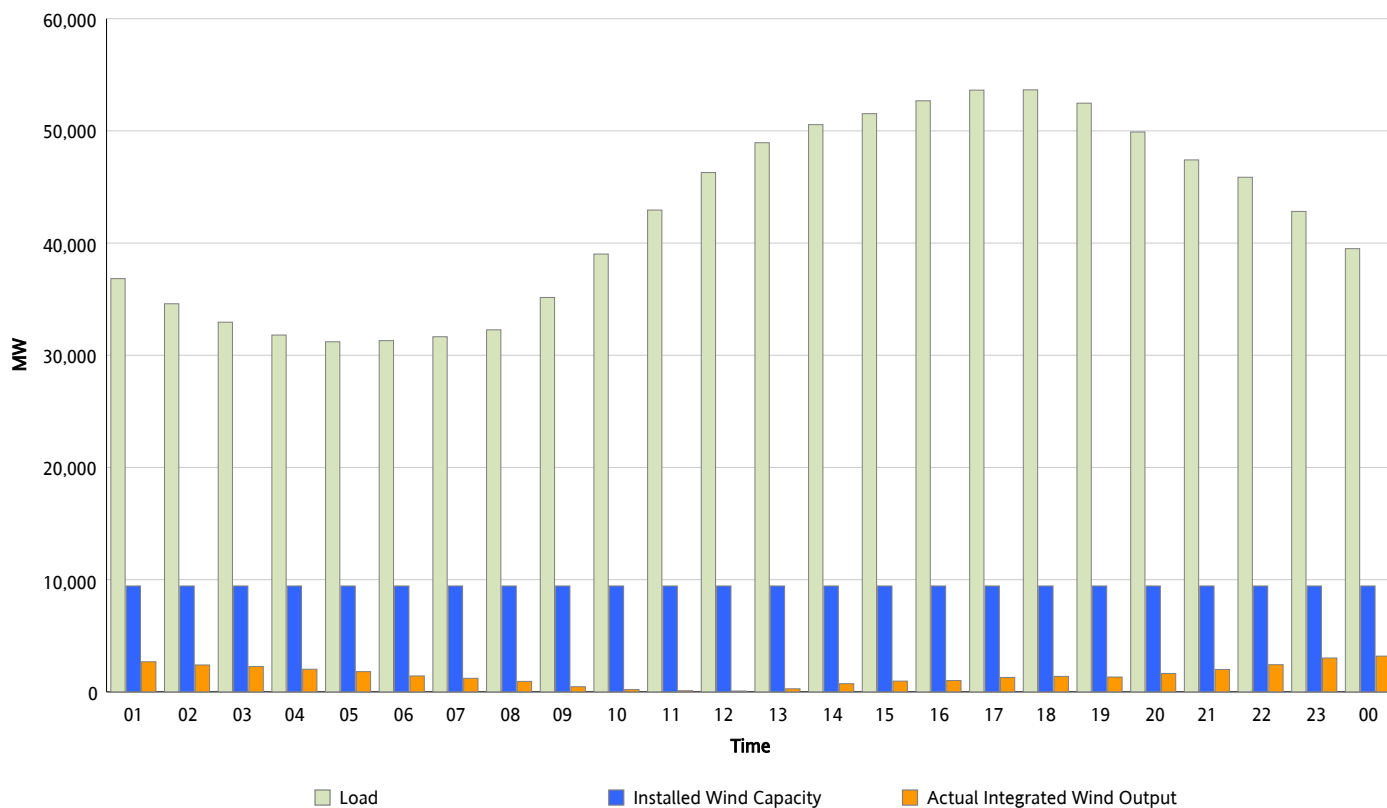


ERCOT Grid Operations

Wind Integration Report : 07/14/2012

Peak Load	53,656 MW
Load Peak Hour (HE)	18
Wind Over Peak	1,381 MW
Wind Record 06/19/12	8,368 MW
Max Wind Value*	3,341 MW
Wind Peak Time	23:58
Wind Integration %	8.79 %

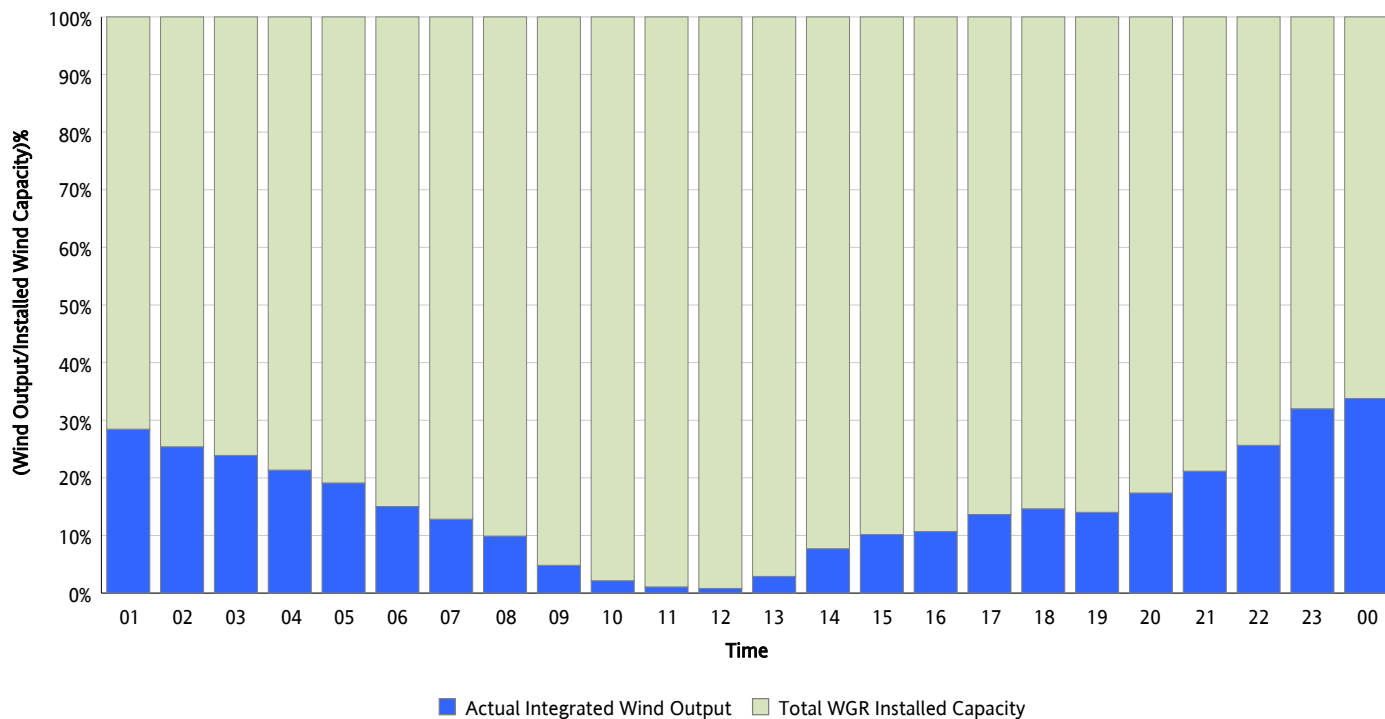
Hourly Average Actual Load vs. Actual Wind Output
07/14/2012



** Wind Record and Wind Max represent instantaneous values and the rest of the values are integrated over the hour*

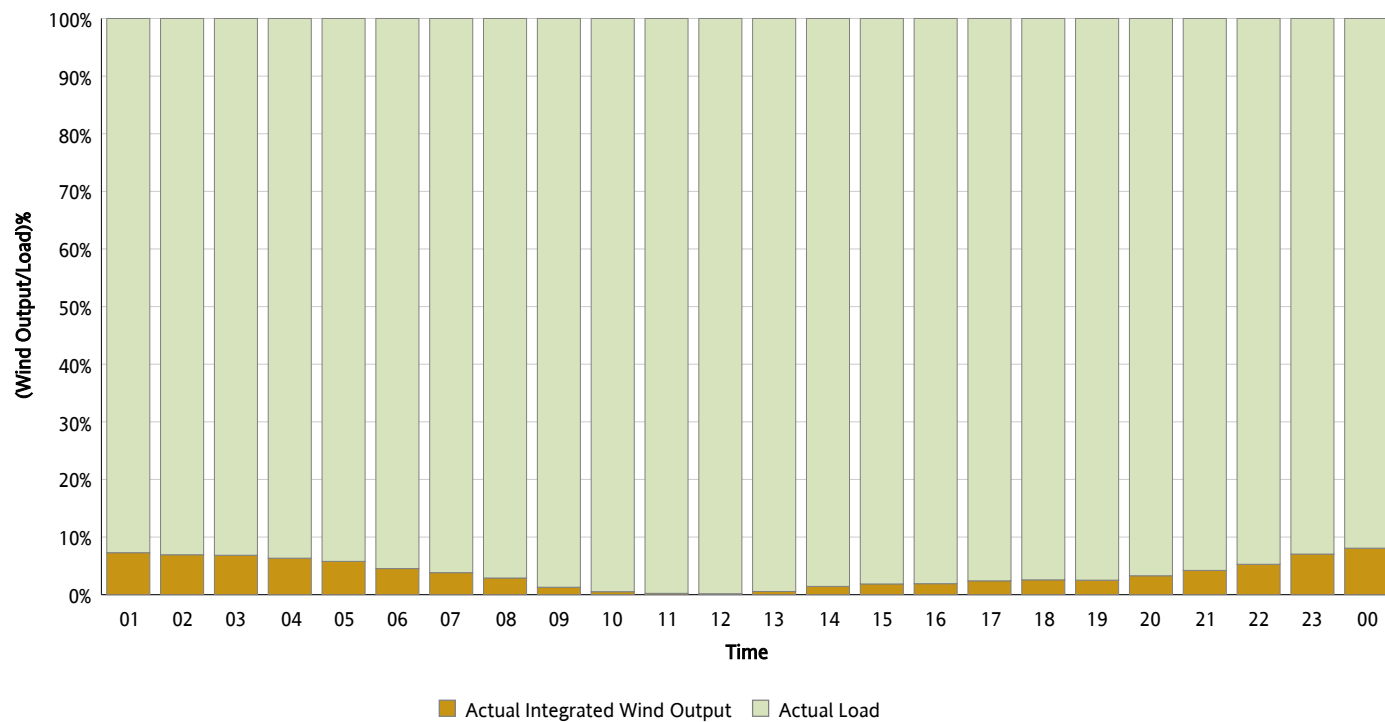
Actual Wind Output as a Percentage of the Total Installed Wind Capacity

07/14/2012



Actual Wind Output as a Percentage of the ERCOT Load

07/14/2012



ERCOT Load vs. Actual Wind Output

07/07/2012 - 07/14/2012

